

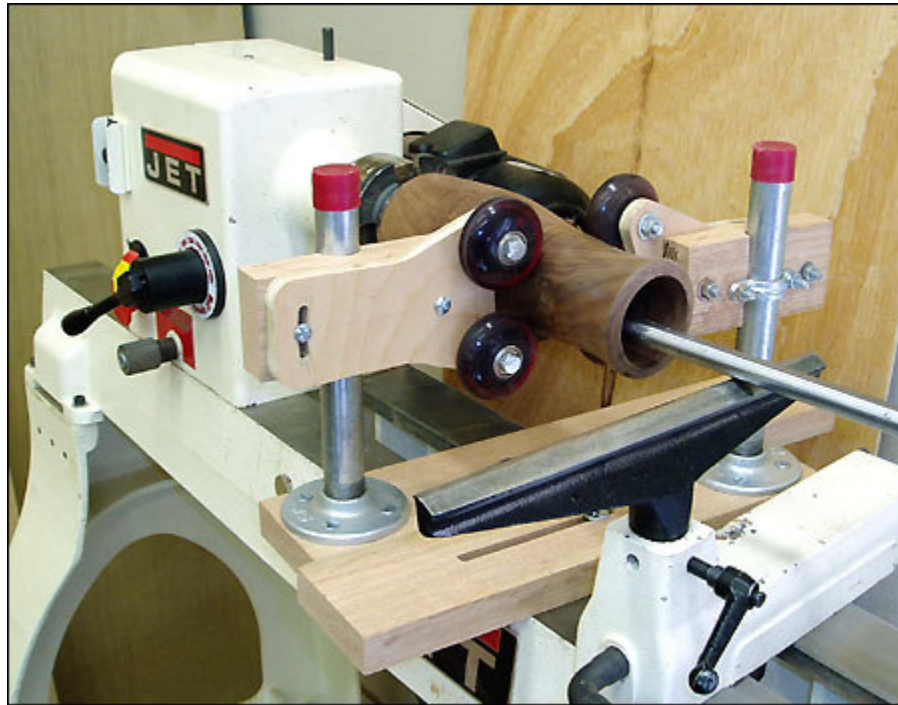
Yankee Bowl Steady

Shopping around for a bowl steady for my 14 x 42 Jet Lathe I discovered a nice one for about \$100. At the time I didn't want to part with that much. Searching the internet I saw a shop made one that used what looked like 2 x 4's. With the Yankee mind I inherited, a combination of the too rich design and the 2 x 4 design came to my mind. It works great and for under \$50 I made two, one for the front and one for the rear. Each one has two wheels spaced to provide good support for bowls or vases.

Perhaps other economically minded wood turners might enjoy making their own also. Mine is made for a Jet 14 x 42 lathe. Some dimensions may need to be modified for a different make or size.

Enclosed are photos and sketches of the Yankee Bowl Steady.

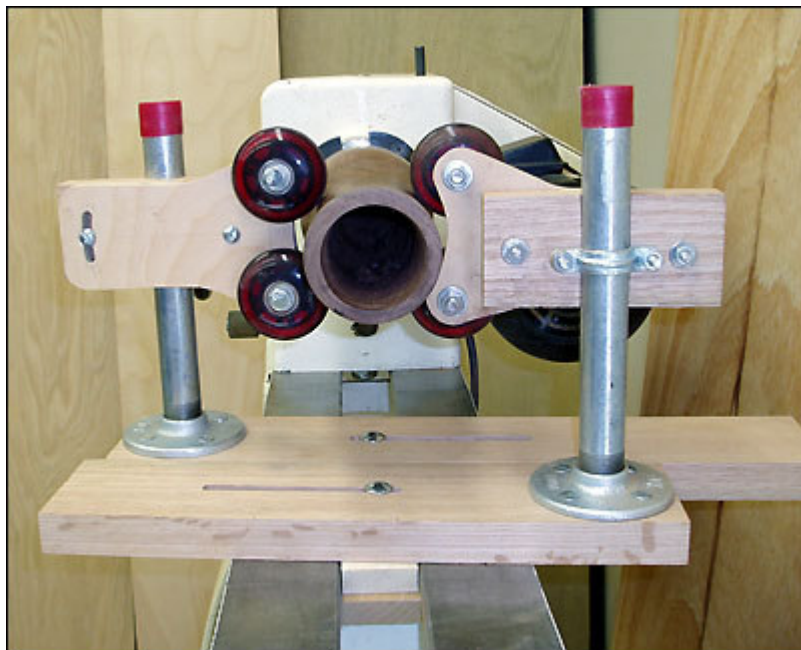
Yankee Bowl Steady



Bill of Material:

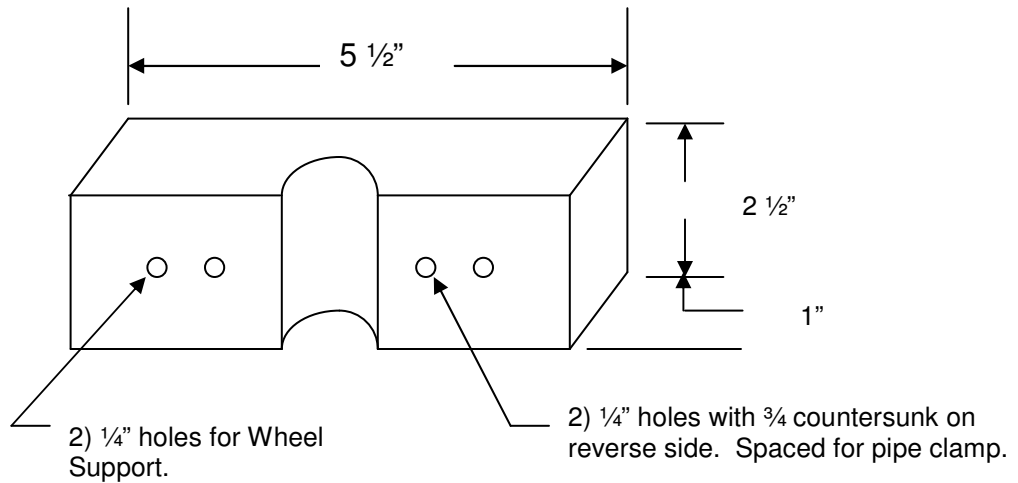
1. 1) $\frac{3}{4}$ inch pipe. I used one 18" long cut in half to make two.
2. 1) $\frac{3}{4}$ inch flange
3. 1) $\frac{3}{4}$ inch pipe clamp. I used the other half for the second steady
4. 1) $\frac{5}{16}$ x $2\frac{1}{2}$ Carriage Bolt with nut. To hold unit on lathe.
5. 2) $\frac{1}{4}$ x 2 Round Head bolts with nuts and washers.
6. 2) $\frac{1}{4}$ x $1\frac{1}{2}$ Hex Head bolt and nuts
7. 4) $\frac{1}{4}$ x $1\frac{1}{4}$ Flat Head bolts and nuts
8. 2) $\frac{5}{16}$ x 2 Hex Head bolts, nuts & 2 washers each.
9. 2) 55 mm x 59 Inline Skate Wheels. (about $2\frac{1}{4}$ " dia.)
10. 4) Wheel Bearings
11. 1) 1 x $3\frac{1}{2}$ x 15 Hardwood. I used red oak
12. 1) 1 x $2\frac{1}{2}$ x $5\frac{1}{2}$ Hardwood. Red oak.
13. 1) $\frac{1}{2}$ x 5 x $6\frac{1}{2}$ Plywood.
14. 1) $1\frac{1}{8}$ x $2\frac{1}{2}$ x 4 Hardwood. I made mine with two pieces double sticky taped to keep them together.

The hardware costs about \$12 at a local home center or hardware store.
The wheels and bearings cost about \$12 plus shipping. Mine came from:
Discount Wheel and Skate at www.discountwheelandskate.com
The wood came from my scrap pile.



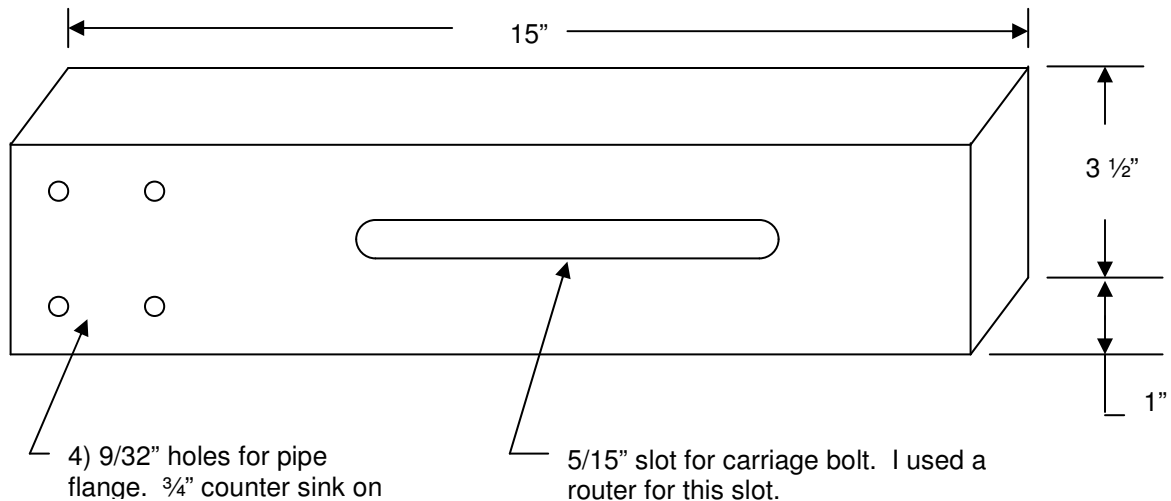
Yankee Bowl Steady

POST SUPPORT



Note: I used red oak. Any hardwood should work. Since I wanted two Bowl Steadies, I clamped two together to drill the 1 1/8" hole for the 3/4" pipe

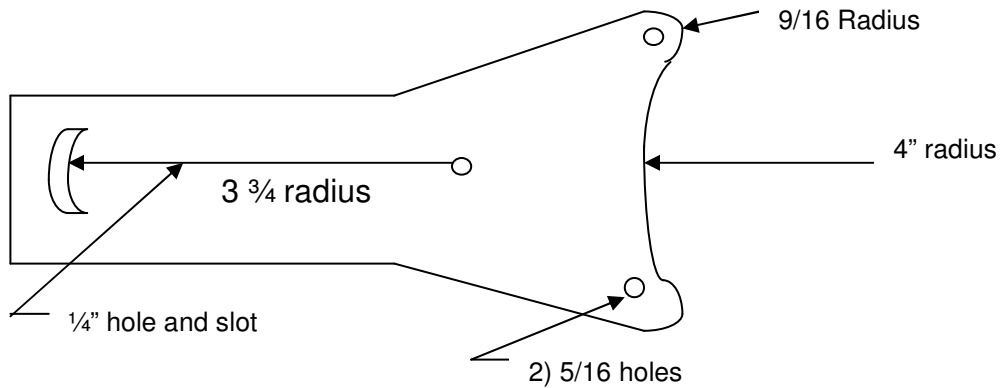
BASE



Note: I used red oak. This was sized for a 14 x 42 Jet Lathe. It accommodates bowls from 2" to 10 1/2" in diameter. Yours may be different.

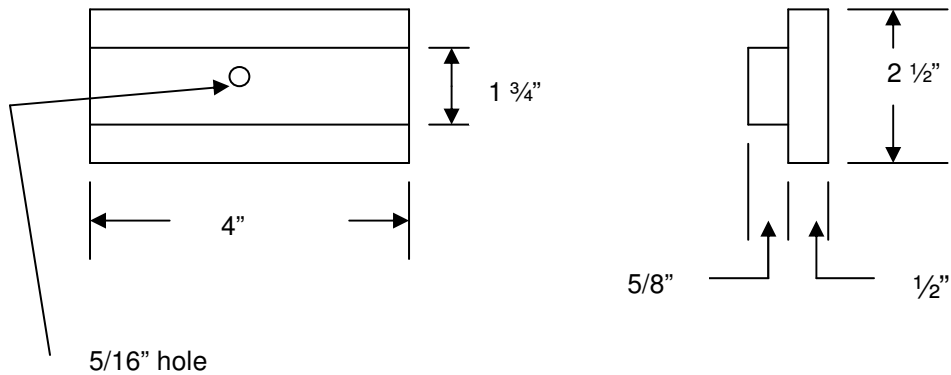
Yankee Bowl Steady

WHEEL SUPPORT



Note: I made this from 1/2" plywood. I made the slot on a router table using a circle jig. The hole and slot must match holes in the Post Support.

BASE SUPPORT



Note: This part must be sized for your lathe. (To fit between and under the lathe beds.) The carriage bolt goes through this and the Base to hold the Steady on the lathe bed.

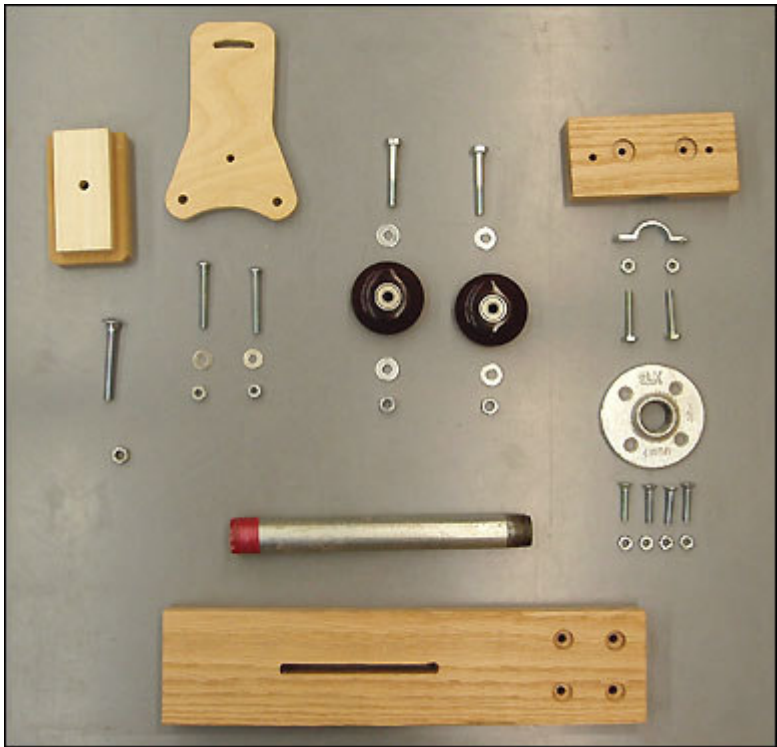


Photo of all parts for one unit.

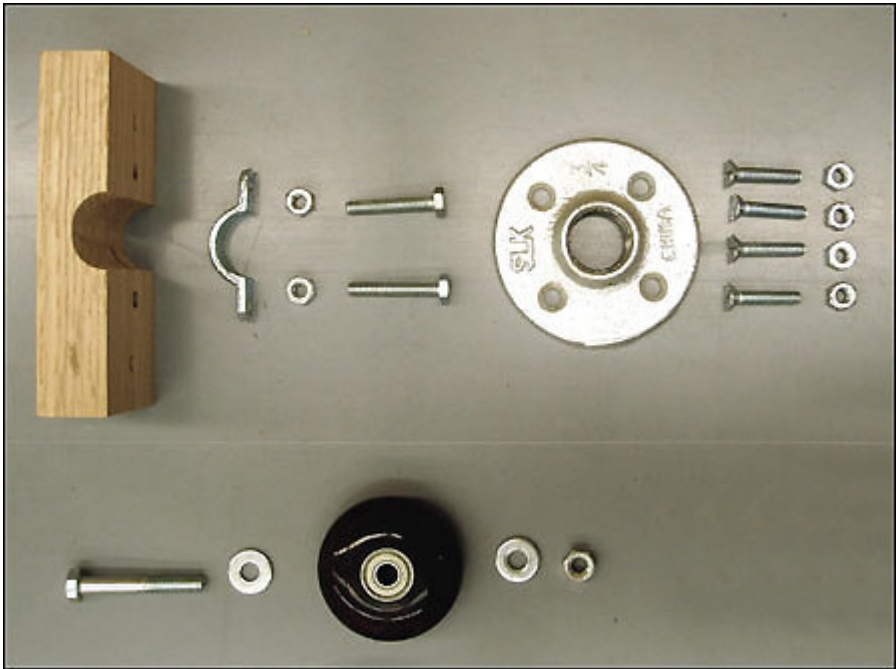


Photo showing view of Post Support